

# SMARTair™ Escutcheons

## Wireless and battery powered



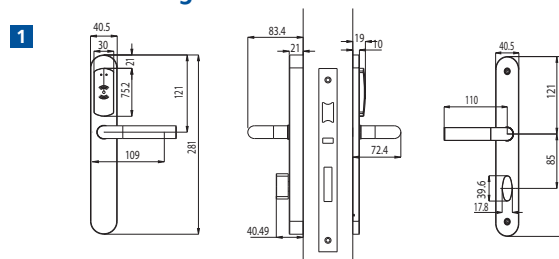
### Technical data – SMARTair™ escutcheons

	<b>Application</b>	Ideal for Transit, Office or meeting room doors (Specific model for panic exit doors & special kits for glass doors available)
	<b>Door profiles</b>	Euro, Scandinavian, DIN, ANSI, suitable for wooden, narrow or glass doors
	<b>Verticals</b>	All industries, Special antibacterial surface for health-care applications
	<b>Traffic volume</b>	Medium to high
	<b>Exterior usage</b>	Yes (IP55), Up to 85% humidity without condensation, Temperature outside (-20°C and +70°C), inside (0°C and 50°C)
	<b>Hardware compatibility and installation</b>	High retrofit (compatible with most mortise locks), Drilling, no cabling
	<b>Power supply</b>	Battery (up to 70.000 Cycles, max. 3 years standby)
	<b>System management</b>	Standalone, Offline, Update on Card, Wireless online
	<b>Multi-authentication</b>	Reader and PIN
	<b>Status information</b>	Handle usage, optional combinable with position sensor (for "Wireless online")
	<b>Certifications</b>	CE, EN1634 (Fire), DIN 18273

### SMARTair™ escutcheons – versions and profiles



### Technical drawings and dimensions



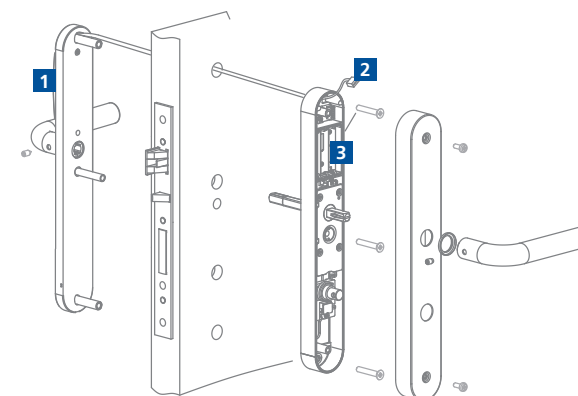
1. European profile

### Handle shapes and surfaces

- Optional additional handle version available
- Antibacterial surface for healthcare applications available



### Reader elements outside, secure electronic inside



1. RFID reader with LED (green/red signal) on the outside (2 – 4cm read/write distance).
2. Control elements and
3. batteries on the inside to prevent vandalism and manipulation.